

Low cost, real-time monitoring and reporting of production, run/down time, rate, cycle time, OEE/performance and more ...from all your production machinery.

Production Manager/02 will dramatically improve your manufacturing productivity:

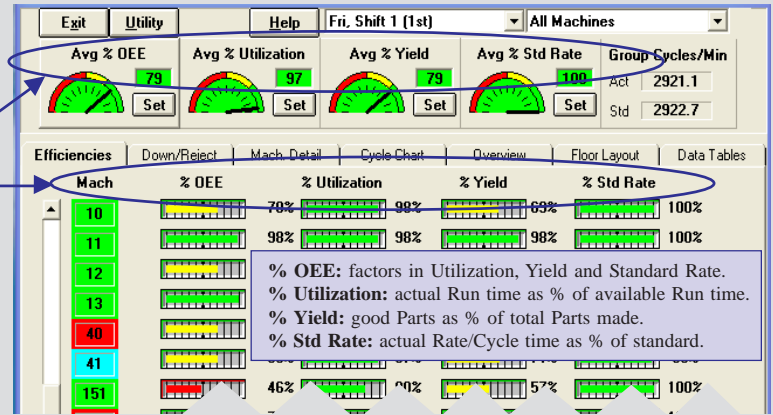
Prevent problems with a real-time performance/OEE dashboard.

View overall plant/department OEE and its three components on four gauges. Capture those same metrics from each machine

- as well as: * Cycle Time, Production Rate.
- * Production and Scrap counts.
- * Run time, Down Time.

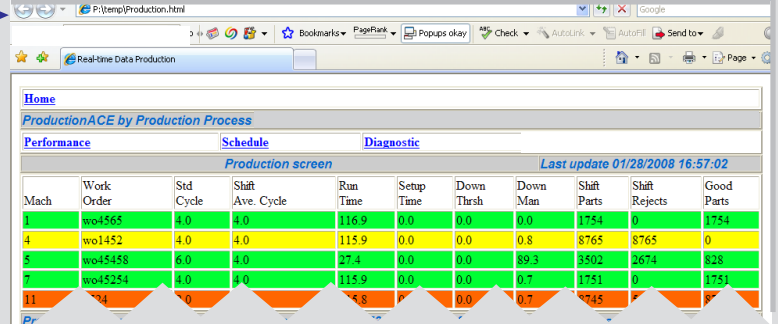
Develop accurate job cost data and production standards.

Compare actual results against standards to make your product costing accurate.



Open a real-time "window" on your production operations.

Select Data Functions you wish to display, view them anywhere, any time...in real-time with a Web browser.



Track and analyze OEE/TPM program Six Big Losses.

Record downtime due to breakdowns and start-up. Analyze speed losses due to small stops and reduced speed operation. Measure quality loss by automatically recording start-up rejects.

Eliminate unproductive labor and manual data recording errors.

Print reports with Crystal Reports or export data to Excel.

Summary Managers
Product ID Machine Number

Printed 3/9/09 at 13:32
From 3/8/09 to 3/8/09

Machine	Date	Shift	Prod ID	Overall Eff%	Run Hrs	Dwn Hrs	Mach Util. %	Shift Parts	Shift Rejs	Yield %	Shift Rate
14 Emba	9/6/08	Day	36SSA	92.9	4.4	3.6	55.5	38,747	102	99.7	145.3
14 Emba	9/6/08	PM	36SSA	49.0	2.8	5.2	34.5	20,620	254	98.8	123.3
14 Emba	9/6/08	Eve	36SSA	99.2	5.0	3.0	62.8	41,416	158	99.6	137.3
Grand Totals:				80.3	12.2	11.8	50.9	100,783	514	99.7	135.3

Alert managers to potential problems with real-time e-mail.

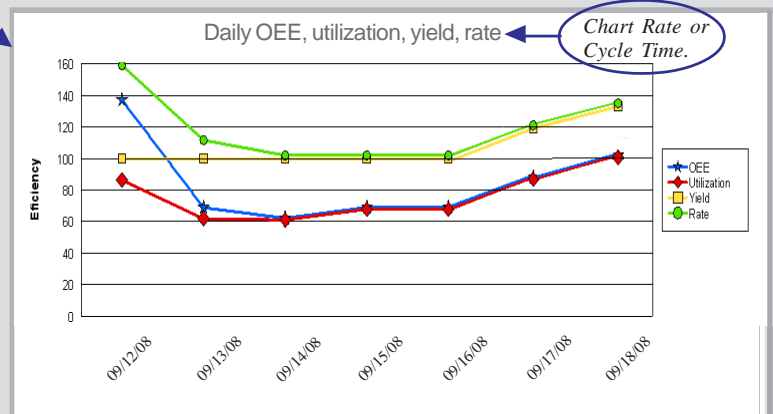
E-mails are automatically sent when performance and OEE targets aren't being met, or machine status/operation changes.

Replace ineffectual calendar scheduled maintenance.

Automatically collect and export cycle count and run time of machines to a CMMS application.

Benchmark your processes, then track results continuously.

Support your Lean/Continuous Improvement and Six Sigma initiatives with accurate tracking of key performance indicators.



Give real delivery promises with visual Job Queue and ERP link.

Upgrade software to **Job Manager/02**, then use visual Job Queue to schedule and track job progress in real-time on each production machine--in-plant or remotely via Web browser. With optional ERP link, download ERP production requirements to Job Queue, then upload production data at job and shift end.

See more at www.productionprocess.com. Ask about a low cost, single machine "Pilot" system.

MDT-02 is a real-time data collection connection to any production machine.

MDT-02 connects to the 24V-120V AC/DC “signals” that operate the machine. Signal Input #1 typically activates each time the machine makes a Part(s). Signal Input #2 can be selected to automatically track machine downtime, or count Rejects or filled Cases, or it can be used with conjunction with Signal #1 in machines with separate Cycle Start and Cycle Stop controls.

Signal Input #1: Machine Cycling or Cycle Start.

Signal Input #2: Choose one at installation:

- Tracks downtime when signal is absent.
- Tracks downtime when signal is present.
- Counts Rejects.
- Counts filled Cases. (*Number of Parts in Case set automatically for each Product run*).
- Indicates End-of-Cycle (*as in CNC machines with separate Cycle Start, Cycle Stop controls*).

MDT-02

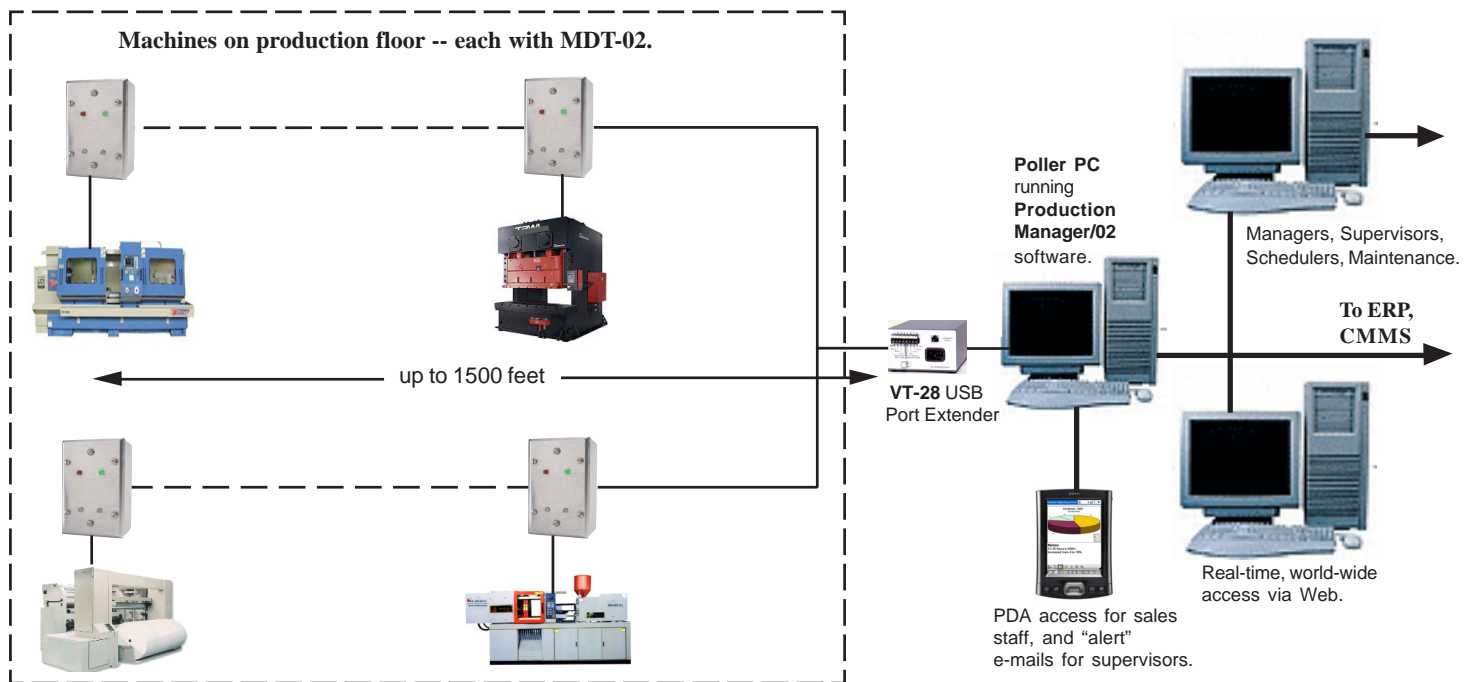
Some Data Functions collected:

- * Cycle Time and Machine and Parts production rate.
- * Parts Count, or material amount processed/made.
- * Process Time: dwell/duration/fill/ inject/form, time.
- * Downtime #1: based on machine operating limit you set.
- * Downtime #2: based on absence of Signal #2.
- * Downtime #3: based in presence of Signal #2. (*You may define this as Setup Time in the System reports*).
- * Reject Parts: from Signal #2.
- * Case Count: Number of filled Cases from Signal #2

“Scale Factor” enables MDT to automatically track multiple Parts made or material processed each machine operation. Scale Factor can be the number of mold cavities or dies active, or the circumference of a cylinder/gear with a once-per-revolution sensor, or the amount/length of material processed each machine cycle.

Installed cost is very low, and so easy any plant electrician can do it.

MDT-02 is powered from VT-28 communications interface, so you don't need a separate power source from the machine. Your plant electrician can quickly install the MDT-02 because it connects directly to the electrical signals that operate the machine. MDT is housed in standard metal (2" x 3" x 4") electrical junction box with 1/2" conduit fittings.



Production Process offers a family of cost-effective systems to improve manufacturing productivity.

For more information or to schedule a “live” system demonstration on your PC with GoToMeeting.com, go to www.productionprocess.com, or contact us at 603-434-2300.

PRODUCTION PROCESS
61 Harvey Road Londonderry, NH 03053 USA