

# The lowest cost data link from any production floor to ERP and CMMS, also records real-time machine OEE, cycle/run/down time, production and job progress data.

**Prevent production problems with a real-time OEE dashboard.** Monitor plant operations, see plant or department OEE and its three components on four gauges. Capture these real-time metrics from any type of production machine:

- \* OEE, Utilization, Yield and Rate/Cycle Time efficiencies.
- \* Run time, Down Time, Cycle Time, Production Rate.
- \* Production and Scrap counts.

**Find the factors limiting machine utilization and productivity.** Analyze performance by shift, department, lot, product, machine, tooling/mold/die, etc.

**View manufacturing data in real-time, anywhere, anytime.**

Select Data Functions to display, view them on any PC on your LAN/WAN, or remotely via Web with a PC or PDA.

**Automated reports eliminate unproductive labor, recording errors.**

Print production reports with Crystal Reports or Excel. For TPM programs, automatically export run time, cycle count to a CMMS.

**Develop accurate job cost data and production standards.**

Compare actual results against standards. Track production in real-time to ensure goals are met, and to minimize WIP.

**Benchmark your processes, then track results continuously.**

Support your Lean/Continuous Improvement and Six Sigma initiatives with accurate measurement of your defined metrics and key performance indicators. Use easy-to-understand graphical displays to track progress.

**Automatically send e-mails to alert managers to problems.**

E-mails are sent to PC or PDA when operational and OEE targets aren't being met or machine status changes.

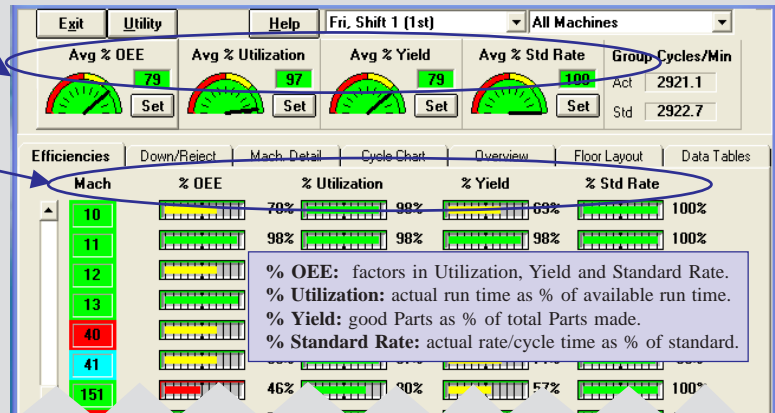
**Visual production scheduling has optional link to ERP.**

Use visual Job Queue to schedule and track Job progress in real-time on each production machine, both locally and remotely via Web. You can also download to Job Queue from ERP, then upload production data at job and shift end.

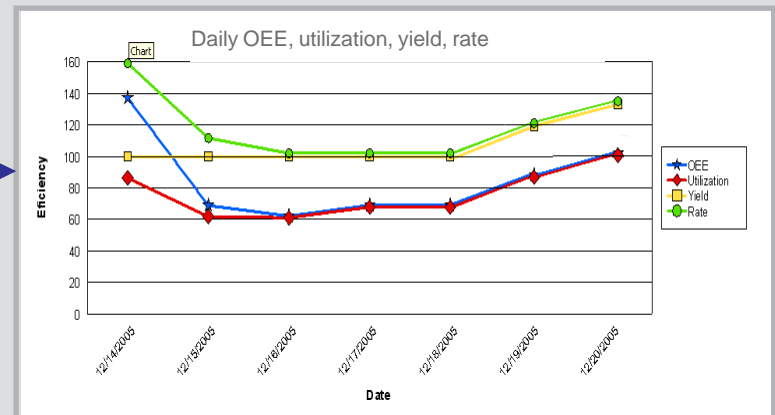
**Expand system easily while keeping costs low.**

Incorporate Machine/Operator interfaces (MDT) to analyze causes for downtime and rejects, track operator and maintenance staff performance, implement usage-based Preventive Maintenance, monitor Process Variables

**See more at [www.productionprocess.com](http://www.productionprocess.com). Ask about a low cost, single machine "Pilot" system.**



Mach	Work Order	Std Cycle	Shift Ave Cycle	Run Time	Setup Time	Down Thrsh	Down Man	Shift Parts	Shift Rejects	Good Parts
1	wo4565	4.0	4.0	116.9	0.0	0.0	0.0	1754	0	1754
4	wo1452	4.0	4.0	115.9	0.0	0.0	0.8	8765	8765	0
5	wo5458	6.0	4.0	37.4	0.0	0.0	89.3	5502	2674	838
7	wo5254	4.0	4.0	115.9	0.0	0.0	0.7	1751	0	1751
11	1524	2.0		115.8	0.0	0.0	0.7	8745	0	8745



Machine	Product ID	Product Desc	Work Order	Parts to go	Est. End
Machine 1	Unscheduled	Sol Chair	wo39547	45000	11/03/06 13:44
	13704.2	Sol Chair	wo39547	45000	11/03/06 13:44
Machine 2	P4	Test	wo2209-1	65000	11/03/06 13:44
	2547BN	Dave Label	wo2209-1	65000	11/03/06 13:44
Machine 30	P6	Test	wo6954	59432	11/03/06 13:44
	5-100-340-46	Chevy Logo	wo77563	4000	11/03/06 13:44
Machine 35	P5	Test	wo5656	990524	11/03/06 13:44
	3 In Ford Logo	Ford Logo	wo5698	55050	11/03/06 13:44
Machine 40	13704.2	Sol Chair	wo5345	50	11/03/06 13:44
	2547BN	Dave Label	wo5345	50	11/03/06 13:44

## MDT-02 is a simple-to-install, data collection connection to any production machine.

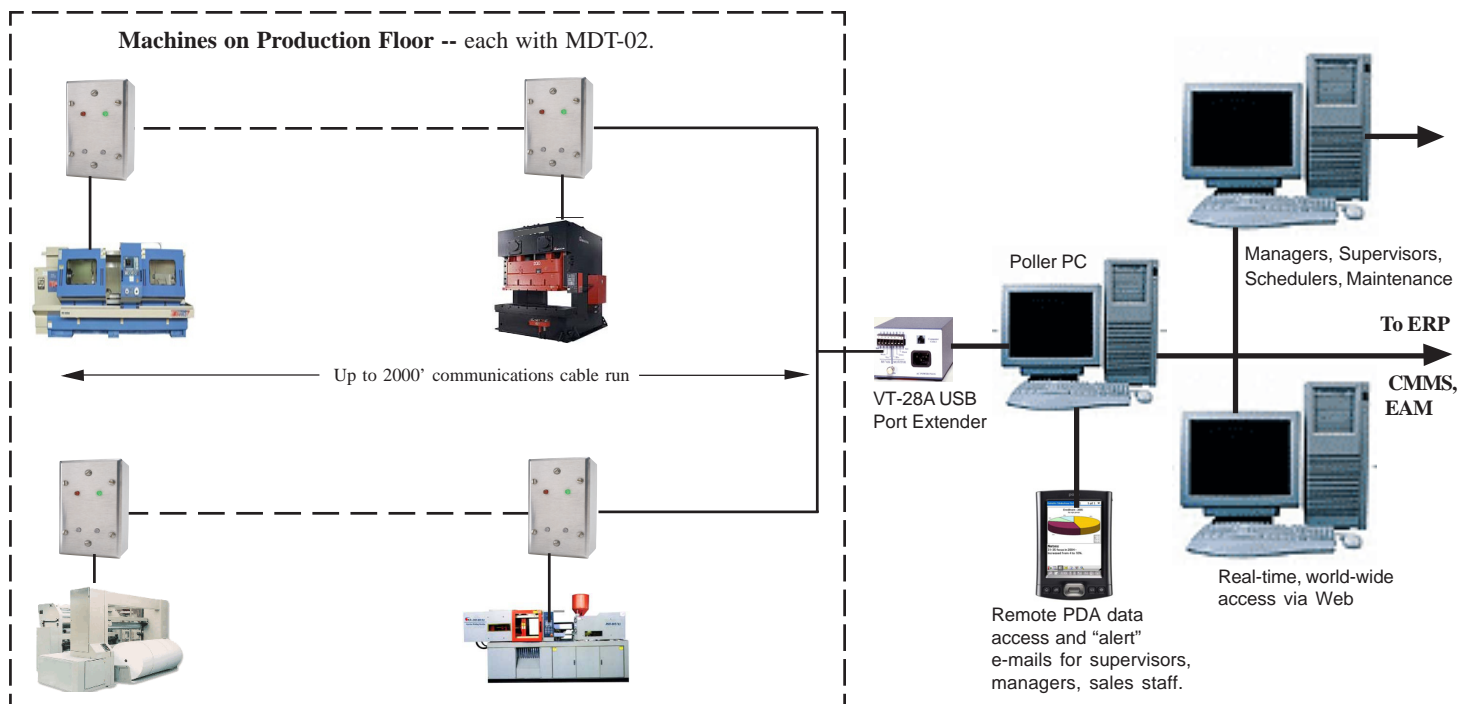
MDT-02 connects directly to 24V to 120V AC/DC signals that already exist in the machine. Signal Input #1 connects to a device in the machine that is activated each time the machine makes a part(s). Signal Input #2 automatically tracks machine downtime. Signal Input #3 can count Rejects, filled Cases or act as separate Totalizer. Unit is housed in small, standard metal electrical junction box with 1/2" conduit fittings.



User-set "Scale Factor" enables MDT to automatically track multiple Parts made each machine operation. Each product has an associated Scale Factor to track actual parts or amount of material made/processed each operation of the machine. Scale Factor can be number of mold cavities open, or the circumference of a cylinder with a once-per-revolution sensor, or the length of product that is processed--such as the length of material from a cutoff saw operation.

## MDT's unique capabilities mean installation is simple, economical.

MDT receives its operating power from its communications link, so you don't even have to connect to a separate power source at the machine. Use your existing LAN/WAN to provide enterprise wide data access, a plus download ERP production requirements into system's Job Queue to schedule and track jobs at the individual machine level, and export production and productivity data back to ERP at job and shift end.



## Production Process offers a family of economical systems to improve manufacturing productivity.

For more information or to schedule a "live" system demonstration, go to [www.productionprocess.com](http://www.productionprocess.com), or contact us at 603-434-2300 or [info@productionprocess](mailto:info@productionprocess)



61 Harvey Road Londonderry, NH 03053 USA