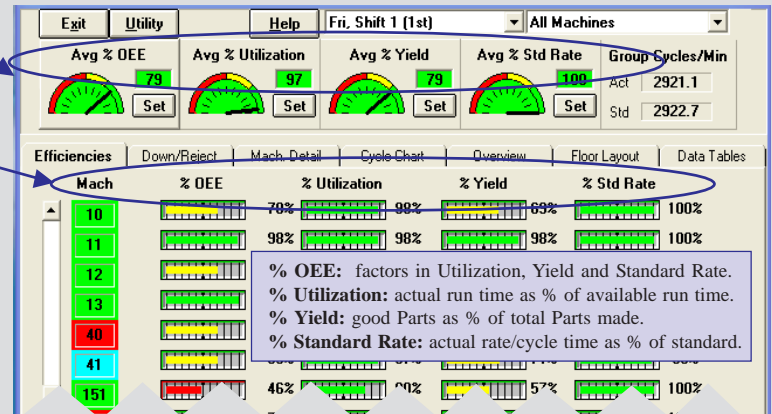


Low cost Production Manager/02: Manufacturing equipment monitoring for production and performance data, run/down/setup time, productivity/OEE.

Prevent problems with a real-time productivity/OEE dashboard.

Monitor plant operations, see plant or department OEE and its three components on four gauges. Capture these real-time metrics from any type of production machine:

- * OEE, Utilization, Yield and Rate/Cycle Time efficiencies.
- * Run time, Down Time, Cycle Time, Production Rate.
- * Production and Scrap counts.

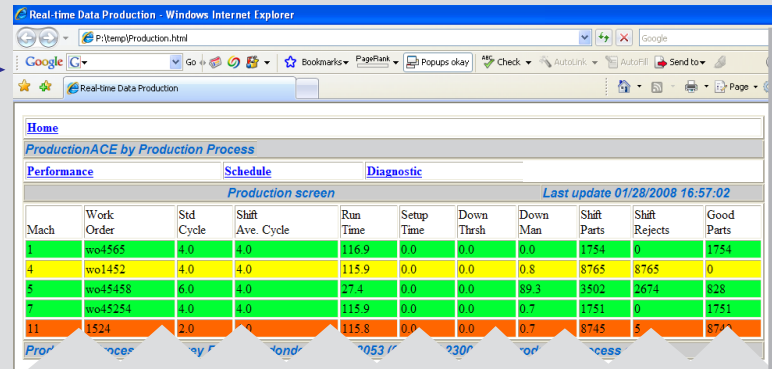


Find the factors limiting machine utilization and productivity.

Track Cycle Time and Rate, Run Time, Down Time, Setup Time. Analyze performance by shift, department, lot, product, machine, tooling/mold/die, etc.

View manufacturing data in real-time, anywhere, anytime.

Select Data Functions to display, view them on any PC on your LAN/WAN, or remotely via Web with a PC or PDA.



Develop accurate job cost data and production standards.

Compare actual results against standards to make your product costing accurate. Track production in real-time to ensure goals are met, and to minimize Work In Process.

Automated reports eliminate unproductive labor, recording errors.

Print standard and custom production reports with Crystal Reports. We provide a variety of useful reports, but its easy to develop your own. You can export to Excel if you're more comfortable using Excel.

Printed 7/6/07 at 13:32
From 7/6/07 to 7/7/07

Summary Managers

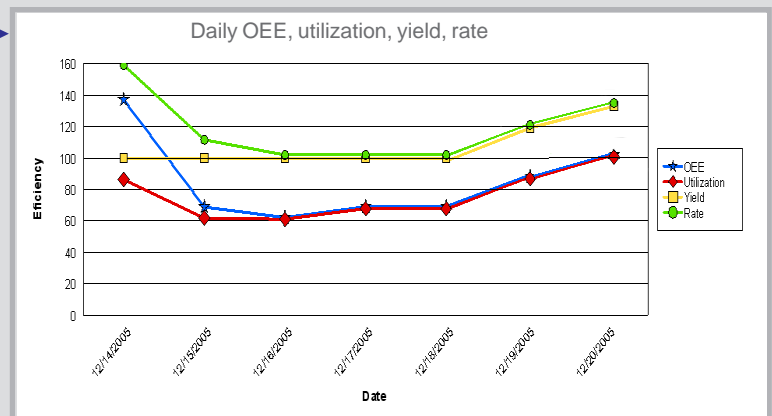
Machine	Date	Shift	Prod ID	Overall Eff%	Run Hrs	Dwn Hrs	Mach Util. %	Shift Parts	Shift Rejcts	Yield %	Shift Rate
14 Emba	7/6/04	Day	36SSA	92.0	4.4	3.6	55.5	38,747	102	99.7	145.3
14 Emba	7/6/04	PM	36SSA	48.1	2.8	5.2	34.0	20,620	254	98.8	123.2
14 Emba	7/6/04	Eve	36SSA	99.0	5.0	3.0	62.0	41,416	158	99.6	137.3
Grand Totals:				79.1	12.2	11.8	50.5	100,783	514	99.7	156.0

System sends e-mail, text messages to alert managers to problems.

E-mails and text messages can be automatically sent to PC, PDA or cell phone when operational and machine, group or department OEE targets aren't being met, or machine status changes.

Benchmark your processes, then track results continuously.

Support your Lean/Continuous Improvement and Six Sigma initiatives with accurate measurement of your defined metrics and key performance indicators. Use easy-to-understand graphical displays to track progress. (This chart shows production Rate, but Cycle Time can be charted too).



Visual production scheduling with optional link to ERP.

Upgrade software to Job Manager/02 and use visual Job Queue to schedule and track job progress in real-time on each production machine, both locally and remotely via Web. You can also download to Job Queue from ERP, then upload production data at job and shift end.

See more at www.productionprocess.com. Ask about a low cost, single machine "Pilot" system.

MDT-02 is a real-time data collection connection to any production machine.

MDT-02 connects directly to 24V to 120V AC/DC signals that already exist in the machine. Signal Input #1 connects to a device in the machine that is activated each time the machine makes a part(s). Signal Input #2 can be selected to automatically track machine downtime in one of two Reasons, or it can count Rejects or filled Cases. Unit is housed in small, standard metal electrical junction box with 1/2" conduit fittings that your electrician is familiar with.

Signal Input #1: Machine "Cycling"

Signal Input #2: Choose one at installation:

- Machine "down" when signal is absent.
- Machine "down" when signal is present.
- Counts Rejects.
- Counts filled Cases. (*Number of Parts in Case set automatically for each Product.*)

MDT-02

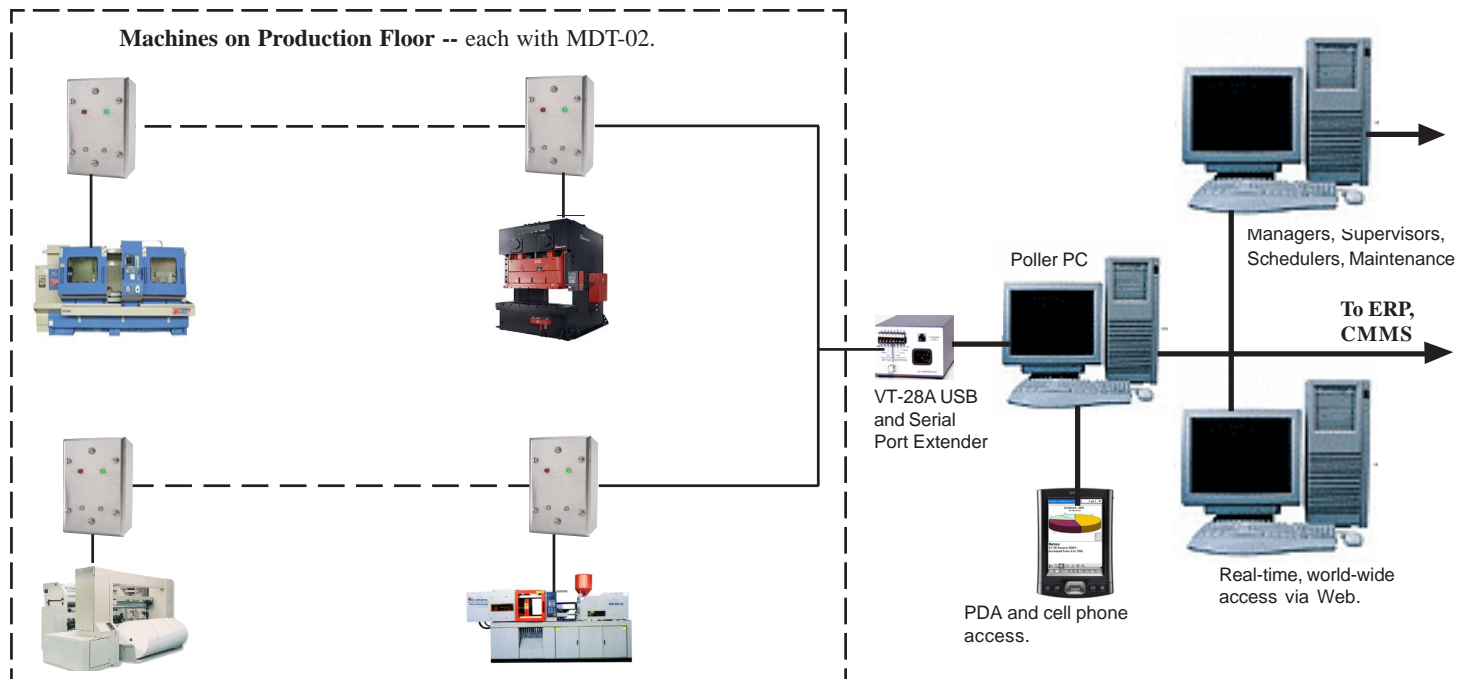
Some Data Functions collected:

- * Cycle Time and Machine and Parts production rate.
- * Parts Count, or material amount processed/made.
- * Process Time: dwell/duration/fill/ inject/form, time.
- * Downtime #1: based on machine operating limit you set.
- * Downtime #2: based on absence of Signal #2.
- * Downtime #3: based in presence of Signal #2. (*You may define this as Setup Time in the System reports.*)
- * Reject Parts: from Signal #2.
- * Case Count: Number of filled Cases from Signal #2

User-set "Scale Factor" enables MDT to automatically track multiple Parts made each machine operation. Each Product has an associated Scale Factor to track actual parts or amount of material made/processed each operation of the machine. Scale Factor can be number of mold cavities open, or the circumference of a cylinder with a once-per-revolution sensor, or the length of product that is processed each machine cycle--such as the length of material from a cutoff saw operation.

MDT's unique capabilities mean installation is simple, economical.

MDT receives its operating power from its communications connection, so you don't even have to connect to a separate power source at the machine. Any plant electrician can install the MDT-02. Use your existing LAN/WAN to provide enterprise wide data access.



Production Process offers a family of economical systems to improve manufacturing productivity.

For more information or to schedule a "live" system demonstration, go to www.productionprocess.com, or contact us at 603-434-2300 or info@productionprocess

